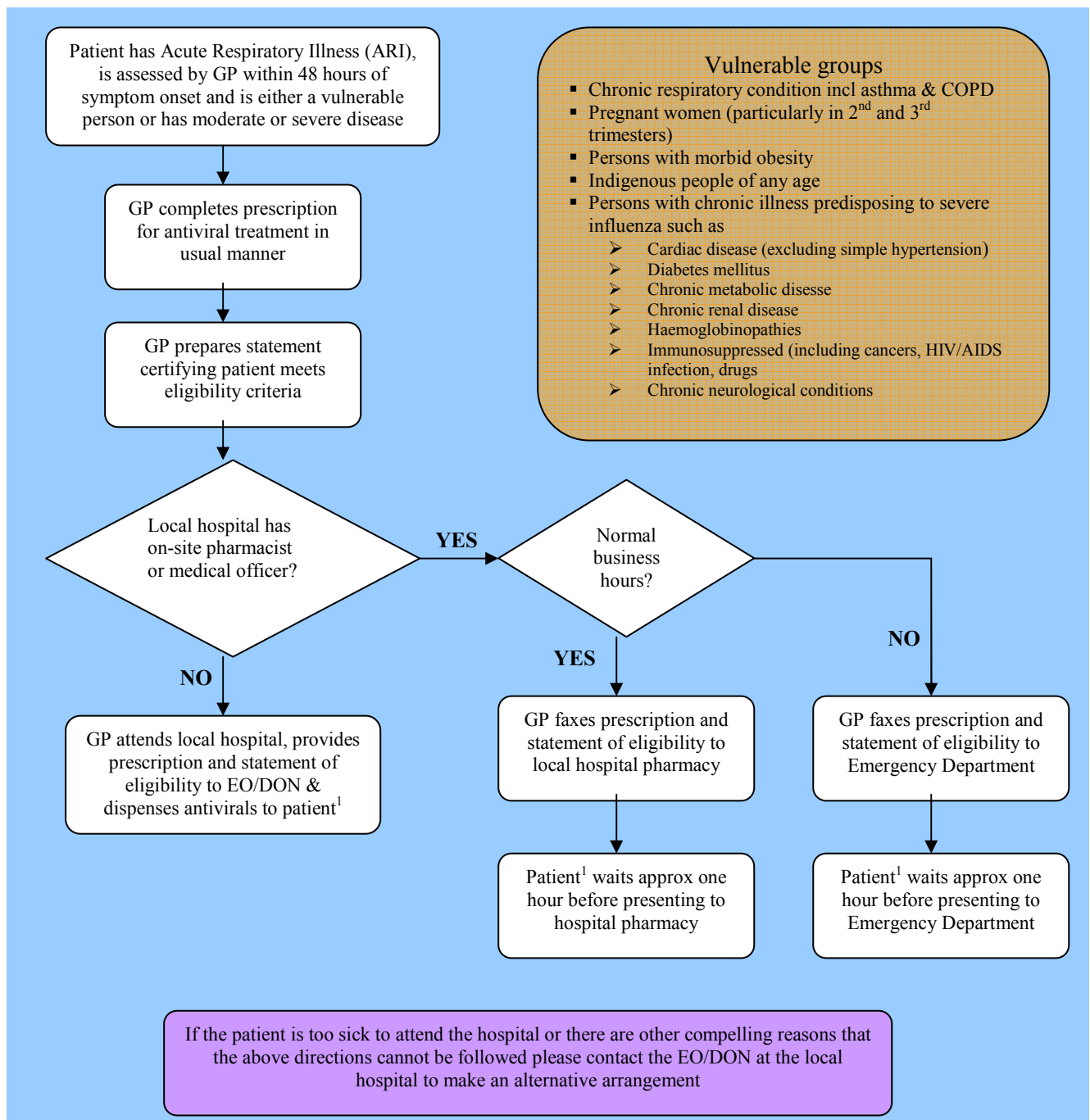


PROCESS FOR ACCESS TO ANTI-VIRAL STOCKS HELD BY NCAHS

The following flowchart is for use by GPs wishing to access Tamiflu capsules (whilst awaiting delivery of stocks ordered through NSW Vaccine Centre) or paediatric suspension held by NCAHS and sourced from the National Medical Stockpile for use in the PROTECT phase of the Australian response to pandemic Human Swine Influenza.

These medications will only be provided to GPs' patients for whom:

1. The GP provides a statement certifying that provision of the antiviral therapy is consistent with Section 2.2 of the PROTECT PHASE Annex to the Australian Health Management Plan for Pandemic Influenza (17 June 2009)
<http://www.healthemergency.gov.au/internet/healthemergency/publishing.nsf>
2. A valid prescription for the patient's treatment with the antivirals is provided by the treating GP to the nominated NCAHS facility.



1. To minimise risk of compromising infection control at the hospital, symptomatic patients should NOT enter facility. A well family member or friend may collect prescribed medications on the patient's behalf or the medications may be handed to the patient outside the facility.
2. If patient must enter facility, GP should provide surgical mask and contact hospital in advance of patient's arrival to advise.