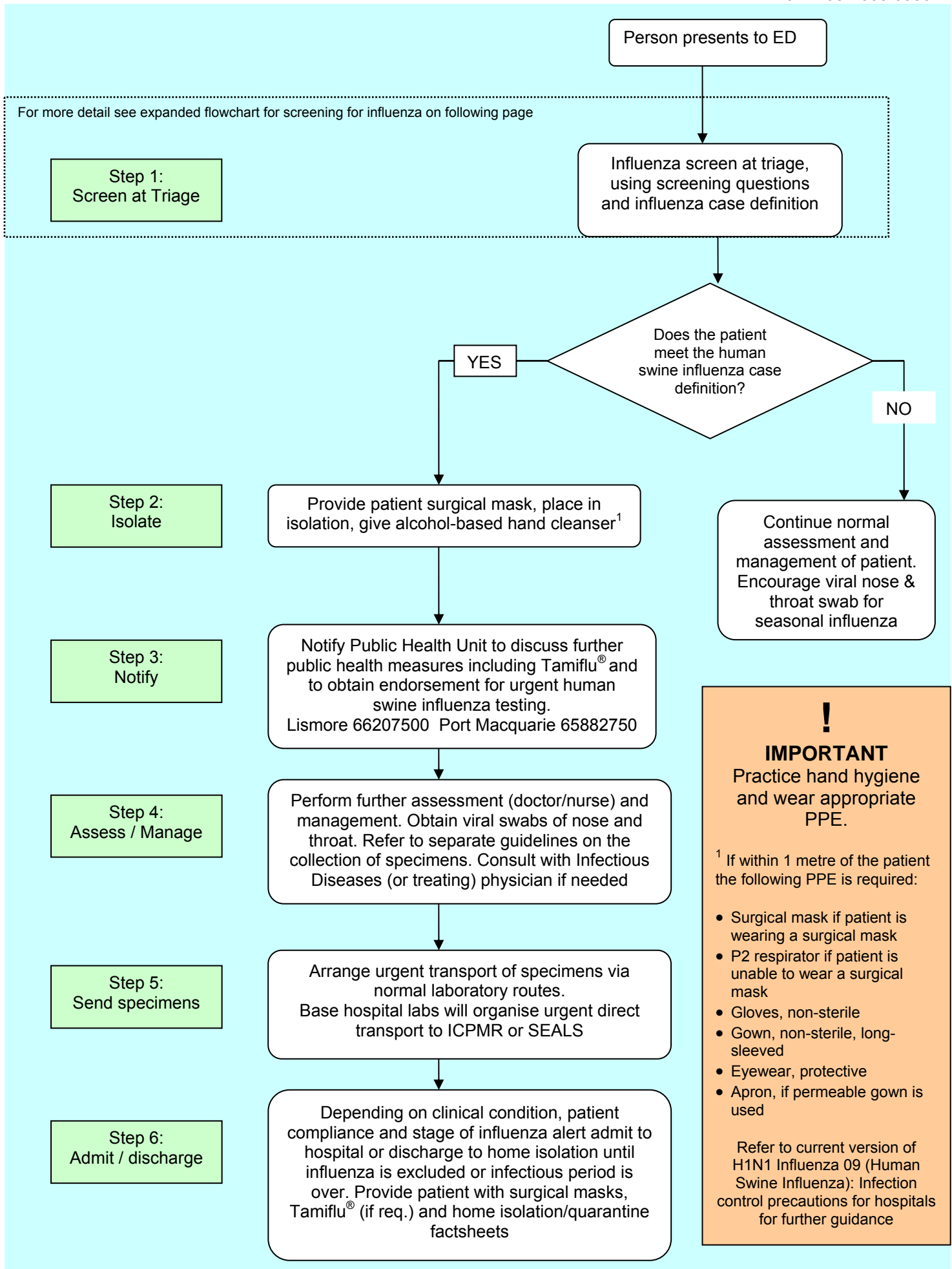


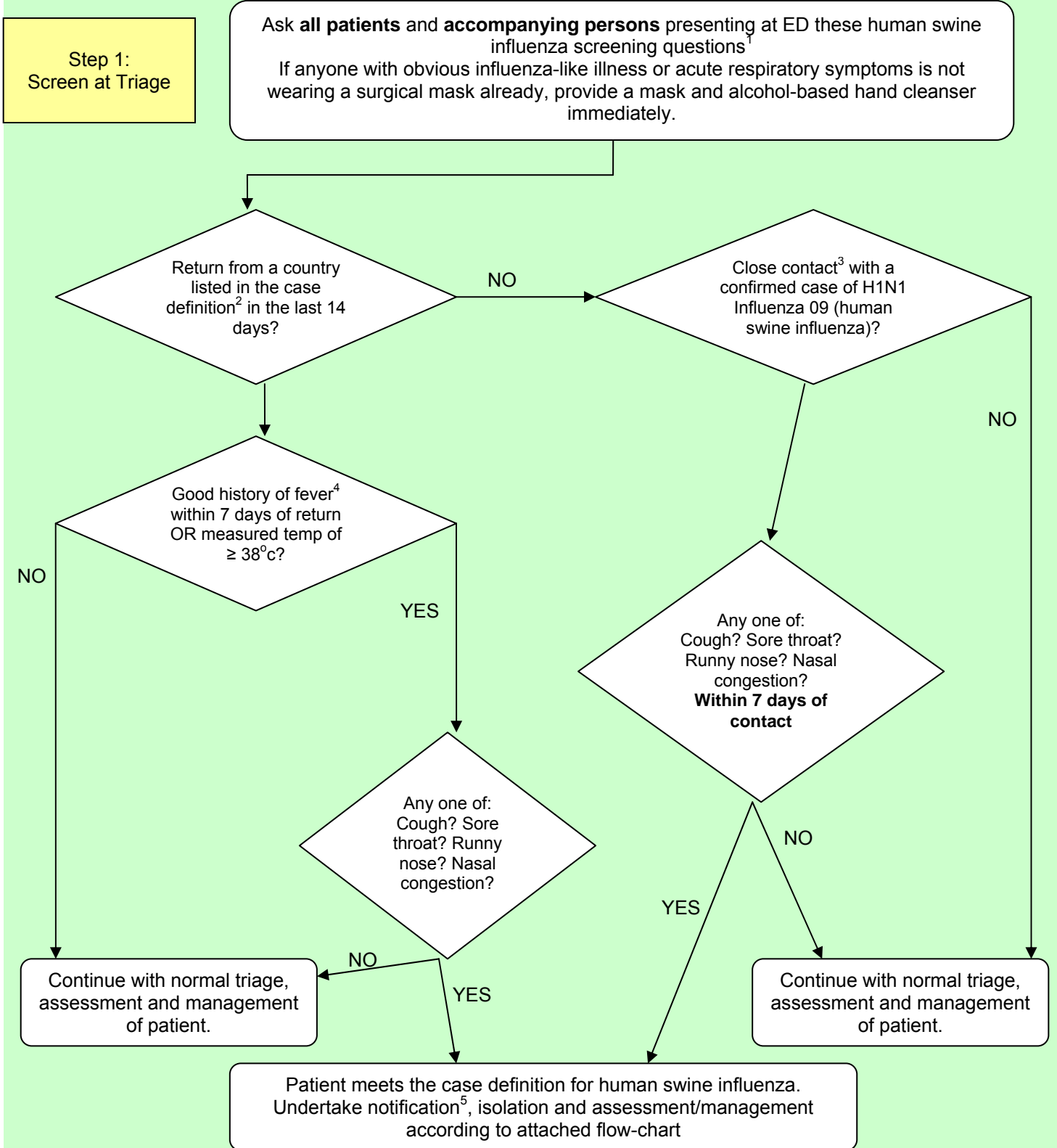
Flow diagram for the screening, assessment and management of a suspected human swine influenza case in the emergency department

V2.1a 27-05-2009 0900



Screening for H1N1 Influenza 09 (Human Swine Influenza) Cases At NSW Education Departments

V2.1a 27-05-2009 0900



1. If within 1 metre of the patient the following PPE is required: Surgical mask if patient is wearing a surgical mask, P2 respirator if patient is unable to wear a surgical mask, gloves (non-sterile), gown (non-sterile, long-sleeved), eyewear (protective), apron (if permeable gown is used)
2. The list of human swine influenza affected countries may change rapidly. The most up-to-date list of countries is included in the case definition available from http://www.health.nsw.gov.au/publichealth/swine_flu
3. "Contact" is defined as a person who has been within 1 metre of an infectious case for at least 15 minutes (eg household member, close work contact, people two rows in front and behind a case on a plane, or school/childcare class mate). Contact Area Public Health Unit for further advice.
4. A history of fever includes either
 - i) a recent temperature of $\geq 38^{\circ}\text{C}$ (within the last 24 hours) as measured and reported by the patient, or
 - ii) a description of chills and/or sweats, or a feeling of being hot and cold.

Public Health Unit contact numbers

Lismore 02 6620 7500

Port Macquarie 02 6588 2750

After hours call 132222 and ask for pager 397635